

Stateline Farm Crawl

Saturday, May 26, 2018

10am ~ 4pm

Four small-scale farms invite you to visit and kick off the 2018 season

Meet the farmers, growers, and cheesemakers at this one-day event

All farms are within 4 miles of each other

Highfield Farm Creamery

Southeast Wisconsin's only farmstead
artisan cheesemakers

W4848 State Line Road, Walworth

www.HighfieldFarm.com

262-275-3027

Alden Hills Organic Farms

Certified Organic grass-fed beef,
pastured poultry, eggs, garlic, popcorn

N237 Alden Road, Walworth

www.AldenHillsOrganicFarms.com

262-275-1070

Tiny Tempest Farm

Organically grown vegetable, herb, and
flower plants for the home gardener

W4355 Mohawk Road, Lake Geneva

www.TinyTempestFarm.com

262-374-4903

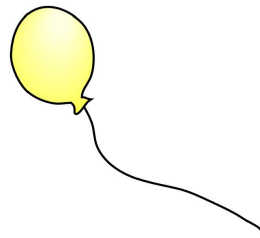
Middlebury Farms

Certified Organic vegetable farm
and CSA

10107 Alden Road, Harvard

www.MiddleburyFarms.com

224-588-7457



Watch for the yellow balloons!